

BEST CONTACTS FOR YOUR SUCCESS



Telegärtner

KARL GÄRTNER GMBH

NETWORKING COMPONENTS

COAXIAL CONNECTORS

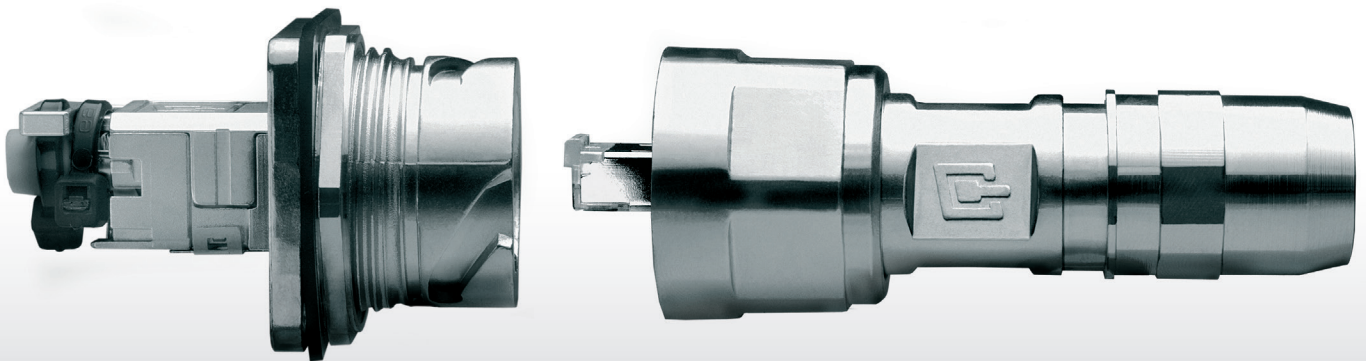
CABLE ASSEMBLIES

PRECISION TURNED PARTS

PLASTIC INJECTION MOULD PARTS

INDUSTRIAL ELECTRONICS

The Future of Industrial Connectors



DataVoice

STX-Industry

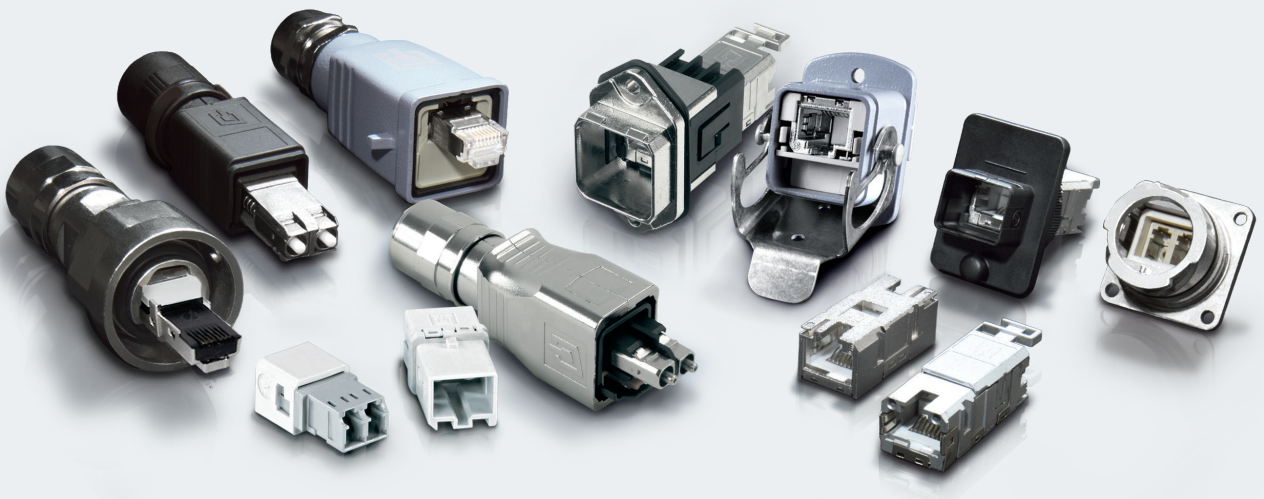
Industrial Connector Platform

The revolutionary platform for industrial connectors...

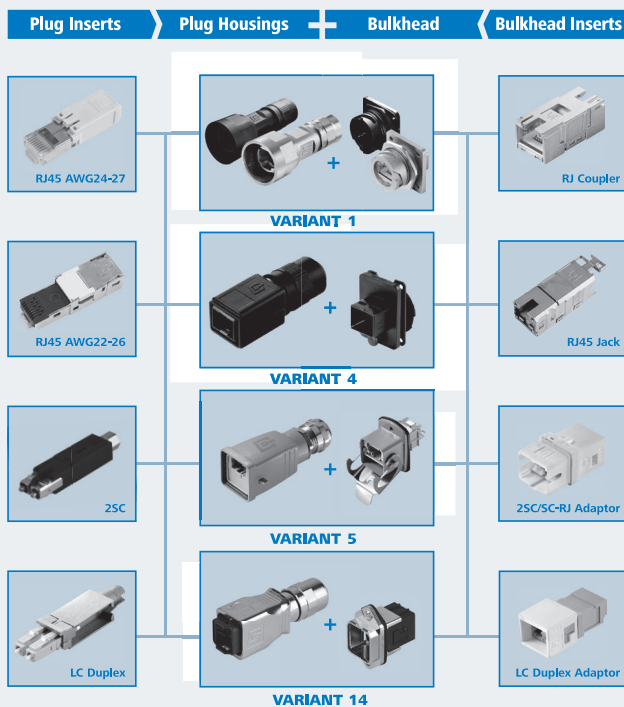
Whether it involves factory, machinery or facility cabling, Variant 1, Variant 4, Variant 5 and Variant 14 industrial connectors from the STX platform together with Variant 6 connectors from Telegärtner offer you first class, standard-compliant Industrial Ethernet solutions.

One reason for this is their resistance to the stresses encountered in industrial environments. A second reason is their modularity: there's nothing like STX where you can equip protective housings with such an unlimited variety of plug or bulkhead inserts.

The right combination for every specification: the modular STX connector system.

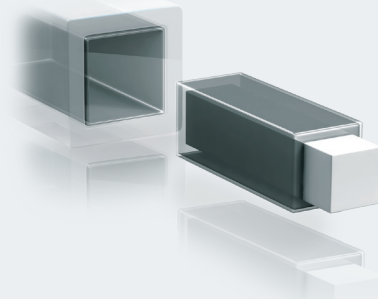


Platform concept



The **STEADYTEC**® platform concept permits inserts of uniform dimensions to be used in different housings.

Telegärtner STX: powered by **STEADYTEC**®



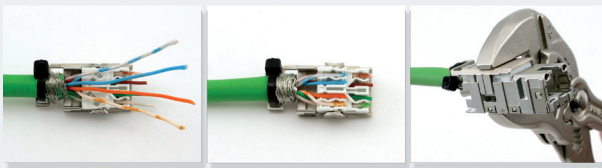
With STX connectors based on **STEADYTEC**®, Telegärtner points the way to the future of connection technology in the area of data, power and signal transmission. **STEADYTEC**® is the only technology which meets all internationally applicable standards and specifications thus forming the reliable, simple, fast and solutions-oriented foundation for STX.

... with significant advantages for field assembly

Field assembly in industrial sites frequently involves difficult to reach locations and additional stresses resulting from dirt. Complicated components which must be assembled on site not only make the installer's task more difficult but also contain the hidden potential for wrong connection

or incorrect assembly. Telegärtner has taken up this challenge and, with STX, has developed a reliable Ethernet solution whose installation and assembly is simpler, more secure and, above all, requires no special tools.

Simpler, more secure, smarter: handling and field assembly with STX



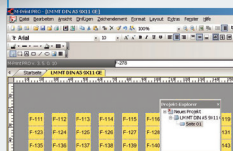
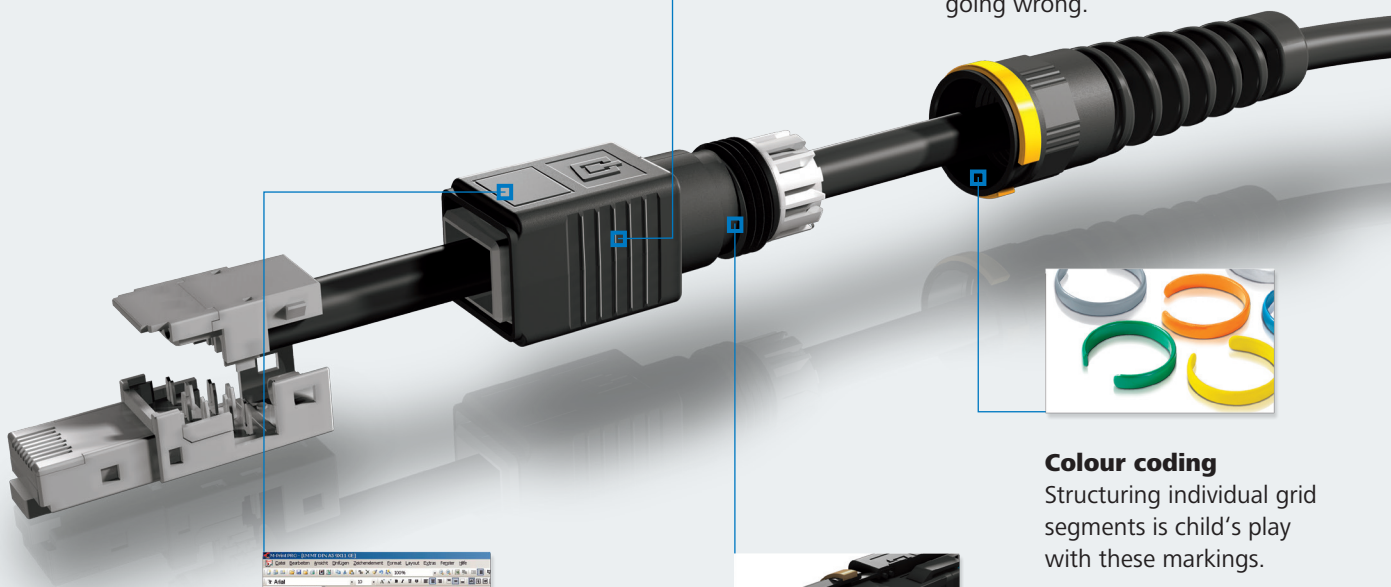
Insert cable – press together – that's it:

That's how easy cable assembly is with Telegärtner STX: thanks to the integrated Cat.6A lead management and optimised IDCs.



Pre-fitted housings and inserts

Simple, because everything is pre-fitted. For the user, this means there are fewer individual parts, there is less time involved, and there is less likelihood of anything going wrong.



Labeling

All the necessary information at a glance: relevant information is printed straight on to a waterproof label by a PC before being attached to the plug housing.



Cable seal and strain relief

The plug housing is slid over the cable, the cable gland is attached and everything is already sealed tight, even in the case of thin and thick cables.



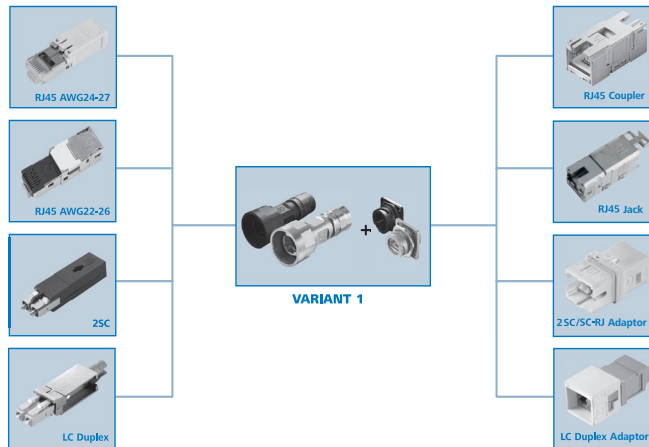
Colour coding

Structuring individual grid segments is child's play with these markings.

Variant 1

Plug and Bulkhead Sets

Plug Inserts + Plug Housings + Bulkhead + Bulkhead Inserts



RJ45 Plug Sets	Order no.		Description	Solid/Stranded	Remarks
	Metal	Plastic			
	J80026A0005	J80026A0009	STX V1 RJ45 plug set Cat.6 _A	AWG24-27	without bend protection
	J80026A0006	J80026A0010	STX V1 RJ45 plug set Cat.6 _A	AWG24-27	with bend protection
	J80026A0007	J80026A0011	STX V1 RJ45 plug set Cat.6 Class E _A	AWG22-26	without bend protection, field assembly
	J80026A0008	J80026A0012	STX V1 RJ45 plug set Cat.6 Class E _A	AWG22-26	with bend protection, field assembly

FO Plug Sets	Order no.		Description	Connector type	Fiber type	Remarks
	Metal	Plastic				
	J88083A0008	J88083A0014	STX V1 FO plug set	25C	Singlemode	without bend protection
	J88083A0009	J88083A0015	STX V1 FO plug set	25C	Singlemode	with bend protection
	J88083A0006	J88083A0012	STX V1 FO plug set	25C	Multimode	without bend protection
	J88083A0007	J88083A0013	STX V1 FO plug set	25C	Multimode	with bend protection
	J88083A0010	J88083A0016	STX V1 FO plug set	25C	POF	without bend protection
	J88083A0011	J88083A0017	STX V1 FO plug set	25C	POF	with bend protection
	J88073A0006	J88073A0010	STX V1 FO plug set	LC Duplex	Singlemode	without bend protection
	J88073A0007	J88073A0011	STX V1 FO plug set	LC Duplex	Singlemode	with bend protection
	J88073A0004	J88073A0008	STX V1 FO plug set	LC Duplex	Multimode	without bend protection
	J88073A0005	J88073A0009	STX V1 FO plug set	LC Duplex	Multimode	with bend protection

RJ45 Bulkhead Sets	Order no.		Description	Insert
	Metal	Plastic		
	J80020A0001	J80020A0003	STX V1 bulkhead set	RJ45 coupler Cat.6 Class E _A
	J80020A0000	J80020A0002	STX V1 Bulkhead set	RJ45 jack A Cat.6 _A *

FO Bulkhead Sets	Order no.		Description	Fiber type	Insert
	Metal	Plastic			
	J88084A0003	J88084A0005	STX V1 bulkhead set	Singlemode	25C/SC-RJ adaptor
	J88084A0002	J88084A0004	STX V1 bulkhead set	Multimode	25C/SC-RJ adaptor
	J88074A0003	J88074A0005	STX V1 bulkhead set	Singlemode	LC Duplex adaptor
	J88074A0002	J88074A0004	STX V1 bulkhead set	Multimode	LC Duplex adaptor

Outlets	Order no.	Description	Housing	Insert	Remarks
	J80023A0016	STX V1 surface mounting outlet	plastic	RJ45 jack A Cat.6 _A *	including protection cap
	J80023A0017	STX V1 surface mounting outlet	plastic	RJ45 jack B Cat.6 _A **	including protection cap
	J80023A0019	STX V1 free coupling outlet	plastic	RJ45 jack A Cat.6 _A *	including protection cap
	J80023A0020	STX V1 free coupling outlet	plastic	RJ45 jack B Cat.6 _A **	including protection cap

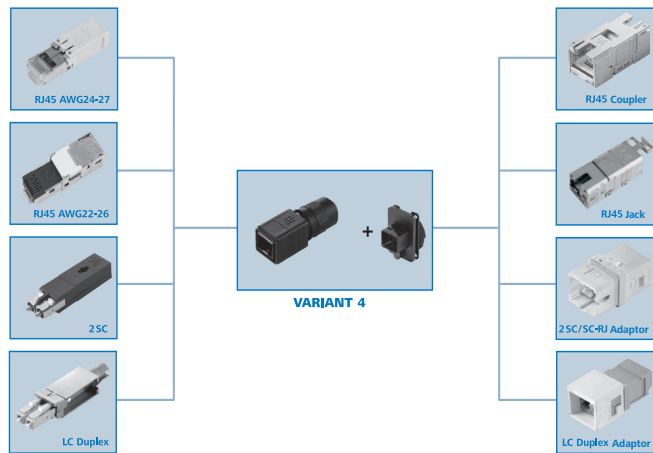
Protection Caps	Order no.	Description	Remarks
	H80030A0000	STX V1 plug protection cap	plastic
	H80030A0004	STX V1 bulkhead protection cap	plastic

*pin assignment acc. to T568A; **pin assignment acc. to T568B

Variant 4

Plug and Bulkhead Sets

Plug Inserts + Plug Housings + Bulkhead + Bulkhead Inserts



RJ45 Plug Sets	Order no.	Description	Solid/Stranded	Housing	Remarks
	J80026A0013	STX V4 RJ45 plug set Cat.6 _A	AWG24-27	plastic	without bend protection
	J80026A0014	STX V4 RJ45 plug set Cat.6 _A	AWG24-27	plastic	with bend protection
	J80026A0015	STX V4 RJ45 plug set Cat.6 Class E _A	AWG22-26	plastic	without bend protection, field assembly
	J80026A0016	STX V4 RJ45 plug set Cat.6 Class E _A	AWG22-26	plastic	with bend protection, field assembly

FO Plug Sets	Order no.	Description	Housing	Connector type	Fiber type	Remarks
	J88083A0002	STX V4 FO plug set	plastic	2SC	Singlemode	without bend protection
	J88083A0003	STX V4 FO plug set	plastic	2SC	Singlemode	with bend protection
	J88083A0000	STX V4 FO plug set	plastic	2SC	Multimode	without bend protection
	J88083A0001	STX V4 FO plug set	plastic	2SC	Multimode	with bend protection
	J88083A0004	STX V4 FO plug set	plastic	2SC	POF	without bend protection
	J88073A0005	STX V4 FO plug set	plastic	2SC	POF	with bend protection
	J88073A0002	STX V4 FO plug set	plastic	LC Duplex	Singlemode	without bend protection
	J88073A0003	STX V4 FO plug set	plastic	LC Duplex	Singlemode	with bend protection
	J88073A0000	STX V4 FO plug set	plastic	LC Duplex	Multimode	without bend protection
	J88073A0001	STX V4 FO plug set	plastic	LC Duplex	Multimode	with bend protection

RJ45 Bulkhead Sets	Order no.	Description	Housing	Insert
	J80020A0005	STX V4 bulkhead set	plastic	RJ45 coupler Cat.6 Class E _A
	J80020A0004	STX V4 bulkhead set	plastic	RJ45 jack A Cat.6 _A *

FO Bulkhead Sets	Order no.	Description	Housing	Fiber type	Insert
	J88084A0001	STX V4 bulkhead set	plastic	Singlemode	2SC/SC-RJ adaptor
	J88084A0000	STX V4 bulkhead set	plastic	Multimode	2SC/SC-RJ adaptor
	J88074A0001	STX V4 bulkhead set	plastic	Singlemode	LC Duplex adaptor
	J88074A0000	STX V4 bulkhead set	plastic	Multimode	LC Duplex adaptor

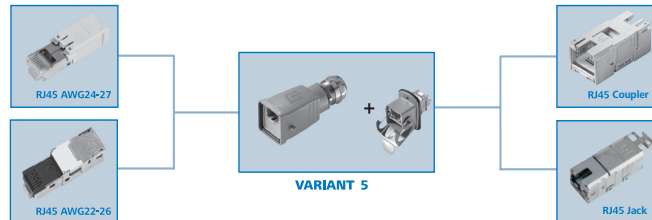
Outlets	Order no.	Description	Housing	Insert	Remarks
	J80023A0010	STX V4 surface mounting outlet	plastic	RJ45 jack A Cat.6 _A *	including protection cap
	J80023A0011	STX V4 surface mounting outlet	plastic	RJ45 jack B Cat.6 _A **	including protection cap
	J80023A0013	STX V4 free coupling outlet	plastic	RJ45 jack A Cat.6 _A *	including protection cap
	J80023A0014	STX V4 free coupling outlet	plastic	RJ45 jack B Cat.6 _A **	including protection cap


Protection Caps	Order no.	Description	Remarks
	H80030A0001	STX V4 plug protection cap	plastic
	H80030A0005	STX V4 bulkhead protection cap	plastic


*pin assignment acc. to T568A; **pin assignment acc. to T568B

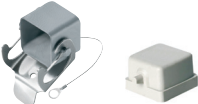
Variant 5

Plug and Bulkhead Sets





RJ45 Plug Sets	Order no.	Description	Solid/Stranded	Housing	Remarks
	J80026A0017	STX V5 RJ45 plug set Cat.6 _A	AWG24-27	aluminium diecast	
	J80026A0018	STX V5 RJ45 plug set Cat.6 Class E _A	AWG22-26	aluminium diecast	field assembly


RJ45 Bulkhead Sets	Order no.	Description	Insert	Housing
	J80020A0007	STX V5 bulkhead set	RJ45 coupler Cat.6 Class E _A	aluminium diecast
	J80020A0006	STX V5 bulkhead set	RJ45 jack A Cat.6 _A *	aluminium diecast

Protection Caps	Order no.	Description	Housing
	H80030A0002	STX V5 plug protection cap	aluminium diecast
	H80030A0006	STX V5 bulkhead protection cap	aluminium diecast

Variant 6

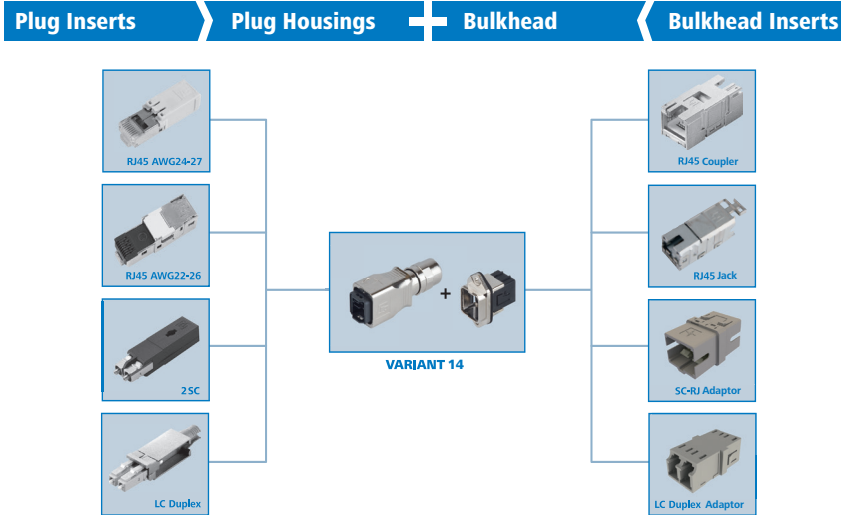
RJ45 plug set	Order no.	Description	Solid/Stranded	Housing
	J00026A0150	STX V6 RJ45 plug set Cat.6 _A	AWG24-27	plastic

Outlets	Order no.	Description	Insert	Housing
	J00020A0436	STX V6 surface mounting outlet	RJ45 jack Cat.6 _A	plastic
	J00020A0437	STX V6 free coupling outlet	RJ45 jack Cat.6 _A	plastic

RJ45 Bulkhead Sets	Order no.	Description	Insert	Housing
	J00020A0480	STX V6 bulkhead set USB-keystone type A, f-f	USB-keystone	plastic
	J00020A0481	STX V6 bulkhead set AMJ Module K	AMJ Module K Cat.6 _A	plastic
	J00020A0483	STX V6 bulkhead set AMJ Coupler K	AMJ Coupler K Cat.6 Class E _A	plastic
	J00020A0482	STX V6 bulkhead set AMJ Coupler K	AMJ Coupler K Cat.5e	plastic

Variant 14

Plug and Bulkhead Sets



AIDA (Automation Initiative of the German Automotive Industry)



RJ45 Plug Sets	Order no.	Description	Solid/Stranded	Housing	Remarks
	J80026A0019	STX V14 RJ45 plug set Cat.6 _A	AWG24-27	Metal	without bend protection
	J80026A0020	STX V14 RJ45 plug set Cat.6 _A	AWG24-27	Metal	with bend protection
	J80026A0021	STX V14 RJ45 plug set Cat.6 Class E _A	AWG22-26	Metal	without bend protection, field assembly
	J80026A0022	STX V14 RJ45 plug set Cat.6 Class E _A	AWG22-26	Metal	with bend protection, field assembly

FO Plug Sets	Order no.	Description	Housing	Connector type	Fiber type	Remarks
	J88083A0024	STX V14 FO plug set	Metal	25C	Singlemode	without bend protection
	J88083A0025	STX V14 FO plug set	Metal	25C	Singlemode	with bend protection
	J88083A0022	STX V14 FO plug set	Metal	25C	Multimode	without bend protection
	J88083A0023	STX V14 FO plug set	Metal	25C	Multimode	with bend protection
	J88083A0026	STX V14 FO plug set	Metal	25C	POF	without bend protection
	J88083A0027	STX V14 FO plug set	Metal	25C	POF	with bend protection
	J88073A0014	STX V14 FO plug set	Metal	LC Duplex	Singlemode	without bend protection
J88073A0015	STX V14 FO plug set	Metal	LC Duplex	Singlemode	with bend protection	
J88073A0012	STX V14 FO plug set	Metal	LC Duplex	Multimode	without bend protection	
J88073A0013	STX V14 FO plug set	Metal	LC Duplex	Multimode	with bend protection	

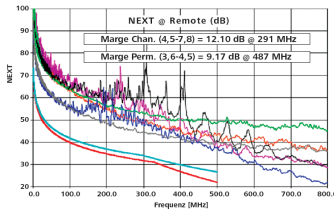
RJ45 Bulkhead Sets	Order no.	Description	Housing	Insert	Remarks
	J80020A0010	STX V14 standard bulkhead set	Metal	RJ45 coupler Cat.6 Class E _A	rectangular mounting cutout
	J80020A0011	STX V14 standard bulkhead set	Metal	RJ45 jack A Cat.6 _A *	rectangular mounting cutout
	J80020A0012	STX V14 central bulkhead set	Metal	RJ45 coupler Cat.6 Class E _A	round mounting cutout
	J80020A0013	STX V14 central bulkhead set	Metal	RJ45 jack A Cat.6 _A *	round mounting cutout

FO Bulkhead Sets	Order no.	Description	Housing	Fiber type	Insert	Remarks
	J88084A0007	STX V14 standard bulkhead set	Metal	Singlemode	SC-RJ adaptor	rectangular mounting cutout
	J88084A0006	STX V14 standard bulkhead set	Metal	Multimode	SC-RJ adaptor	rectangular mounting cutout
	J88084A0009	STX V14 central bulkhead set	Metal	Singlemode	SC-RJ adaptor	round mounting cutout
	J88084A0008	STX V14 central bulkhead set	Metal	Multimode	SC-RJ adaptor	round mounting cutout
	J88074A0007	STX V14 standard bulkhead set	Metal	Singlemode	LC Duplex ad.	rectangular mounting cutout
	J88074A0006	STX V14 standard bulkhead set	Metal	Multimode	LC Duplex ad.	rectangular mounting cutout
	J88074A0009	STX V14 central bulkhead set	Metal	Singlemode	LC Duplex ad.	round mounting cutout
	J88074A0008	STX V14 central bulkhead set	Metal	Multimode	LC Duplex ad.	round mounting cutout

Protection Caps	Order no.	Description	Remarks
	H80030A0003	STX V14 plug protection cap	plastic
	H80030A0007	STX V14 bulkhead protection cap	plastic

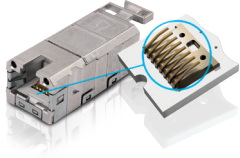
*pin assignment acc. to T568A; **pin assignment acc. to T568B

The performance advantages of STX connectors at a glance



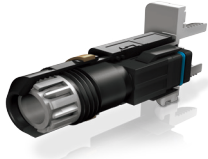
Outstanding transmission rate

Data transfer rates from 10 MB to 10 GB (and, with fiber optics, up to 40 GB) is perfectly suited to modern, 10 Gigabit networks and, thanks to high link reserves, also meets the most stringent requirements with regard to reporting and process control.



Improved contact technology

Reduced mass and greater resilience make the STX contact springs unsusceptible to vibration, shock and mechanical loads and ensure the highest level of contact security under even extreme conditions. Shield bonding is realised with four rather than two contact points.



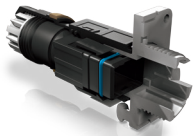
Housing technology

The IP67 classified housings offer optimal protection against water and dirt while simultaneously guaranteeing the easiest possible handling – even after years of use. In addition, they are totally compliant with international standards (IEC 61076-3-106 & IEC 61076-3-117).



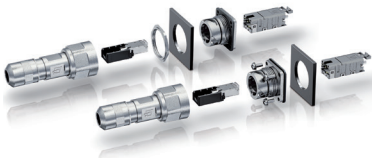
Comprehensive material selection

In the manufacture of the STX housings, Telegärtner places its faith in plastics and metals which are resistant to bases, acids, grease and oils and are uniformly reliable from -40 °C to 70 °C.



Seal technology

The plug housings and bulkheads are water- and dustproof acc. to IP67. The employed seals are characterised by minimal abrasion, optimal handling as well as maximum dimensional stability and impermeability.



Simply clever: straightforward mounting

With STX the user can choose between central screw-on mounting for standard wall connections or a version with 4 screws for exterior mounting. Added to this are components which permit fast installation and maintenance on-site without the need for special tools. Field assembly plug and bulkhead inserts allow easy and fast assembly.

Telegärtner
Karl Gärtner GmbH

Lerchenstr. 35
D-71144 Steinenbronn

Telefon: +49 (0) 7157 / 125-100
Telefax: +49 (0) 7157 / 125-120

E-Mail: info@telegaertner.com
Web: www.telegaertner.com

Your distributor: