

Mechanical characteristics
cables

interface dimensions acc. to assembly code
 centre conductor
 outer conductor
 panel piercing
 mating life

Components

centre contact
 outer contact
 tooth washer
 crimp ferrule
 other metal parts
 insulator
 o-ring

Environmental

RoHS compliant

Mechanische Eigenschaften
Kabel

Steckgesicht nach Montageanleitung
 Innenleiter
 Außenleiter
 Montagebohrung
 Steckzyklen

Bauteile

Innenkontakt
 Außenkontakt
 Fächerscheibe
 Crimprohr
 sonstige Metallteile
 Isolierung
 O-Ring

Umgebung

RoHS konform

G 5: RG-223/U, RG-400/U,
 Traxline Koax 700 CD 1xHF5
 (X-Bend 58 PUR)

IEC 60169-17
 A1105
 Crimp
 Crimp
 Z004
 >500

Materials / Material

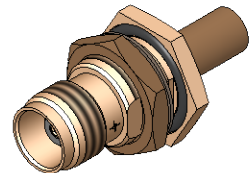
CuNi1Pb1P (C97)
 CuZn39Pb3
 CuSn6
 Cu SF w
 CuZn39Pb3
 PE-LD
 NBR



Finish / Oberfläche

NiP Au
 Cu2Ni5
 Cu2Ni5
 Ni5
 Cu2Ni5

2011/65/EU

M 1:1



| | | | | | | |
|------------------|-------------------------------|-------------|----------------------|--|--------------------------|--|
| Änd./ rev. Index | Änderungs-Nr. / revision code | Datum/ date | Name/ name | Datum/ date | Name/ name | Gewicht/ weight [g] |
| | | | gez./ drawn | 02.10.2019 | MA | |
| | | | gepr./ appr | 08.10.2019 | BJ | ca./approx. 19,2 |
| | | | Maßstab/ scale | Benennung/ title | |  |
| | | | 2:1 (1:1) | TNC Bulkhead Jack TNC-Kabeleinbaubuchse | | |
| | | | Untert./ doc. type | Zeichnungsnr./ drawing no. | |  Maße/ dimensions: mm |
| | | | K | J01011A0076 | | |
| | | | Ersatz für/ replaces | | | Original : DIN A4 |
| | | | | | Blatt/ sheet 1 von/ of 1 | |